



tidirefi

**KLF20
KLF30
KLF50
KLF60
KLF80 laser FIBER**

MARKING MACHINE

**DUAL RED LIGHT POSITIONING
SMALL SIZE
EASY TO OPERATE**



**EASY TO
INSTALL
CONFIGURE
CODE**

| | | | |
|-------------------|---------------------------------------|-------------------|---|
| MODEL | KLF20 / KLF30 / KLF50 / KLF60 / KLF80 | MIN LINE WIDTH | 0.02MM |
| LASER POWER | 20W/30W/50W/60W/80W | MIN CHARACTER | ANY ADJUSTMENT WITHIN THE MARKING RANGE |
| LASER WAVELENGTH | 1064nm | SUPPORTED FORMATS | DXF/PLT/AI/PNG/JPG/BMP |
| MARKING PRECISION | ≤3-5μ | MACHINE POWER | 500W/600W/800W |
| MARKING AREA | 50-300MM(CAN CHOOSE OTHER RANGE) | VOLTAGE INPUT | 110V-220V/50-60Hz |
| APPLICATION | METAL MATERIAL | COOLING MODE | COOLING MODE |
| MARKING SPEED | ≤180000MM/MIN | | |



THE ONLY MANUFACTURER TO OFFER

**NO CONSUMABLES
MAINTENANCE FREE
EASY TO OPERATE**

**FIBER
LASER**



LASER BOX CODING SYSTEM

LASER CODING CORE TECHNOLOGY



The mainframe



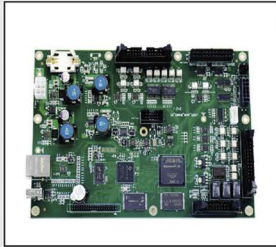
Communication interface



Chassis technology



Separable precision connector



Independently developed main board high making technology



High speed 2d scanning galvanometer



Optical pach adjustment module dual axis can be adjusted 360 degrees

WIDELY USED

EFFICIENT STABLE FLEXIBLE



Leather



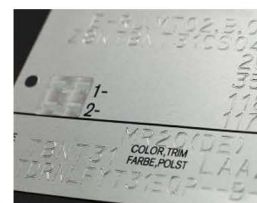
Crystal



Metal



Plastic



Aluminum



Wood



Printers for marking and industrial coding.

www.tidirefi.com

Calle Majuelo 5,
 Pol. Ind. Cantabria I,
 26009 Logroño (La Rioja)
 Spain
 Telf: +34 941 265 066
 info@tidirefi.com